

# Shafer *Line on Wine*



1) In 1511 Pope Julius II convinced England's King Henry VIII to join his "Holy League" against the French by sending the dinner-loving monarch a boatload of what?

**Greek wine and  
Parmesan cheese**

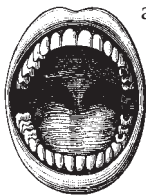
2) The Chilean grape variety Carmenère originally came from where (where it is now extinct)?

**Bordeaux**

3) Researchers in Oregon say wine drinkers in one study could not tell the difference between what kinds of wines in a blind tasting?

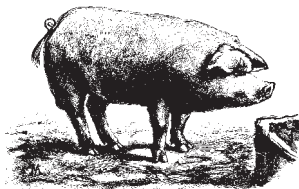
**Those bottled with natural  
cork, synthetic cork or  
screw caps**

4) An Australian researcher advises professional tasters to avoid doing what the morning of a wine competition?



**Brush  
their teeth**

*(the plaque actually spares the  
teeth from the wine's acidity)*



5) In Japan's Katsunuma region, pig farmers produce what they believe is a higher quality of pork by offering their livestock:

**A daily snort of  
white wine**

6) Some scientists hypothesize that human's enjoyment of alcohol is the result of:

**Evolution**

7) The California State Supreme Court recently ruled that wine bottled with Napa Valley on the label should contain what?

**Wine from Napa Valley**

8) Israel's wine industry expanded enormously after 1967 thanks to what historic event?



**A war in which Israel  
acquired the Golan Heights**  
*(an area cool enough to grow  
grapes for premium wines)*

LOOKING FOR A FUN WINE-LOVERS  
GIFT THIS HOLIDAY? SHAFER'S NEW  
112-PAGE LINE ON WINE BOOK IS  
NOW AVAILABLE AT  
WWW.SHAFERVINEYARDS.COM